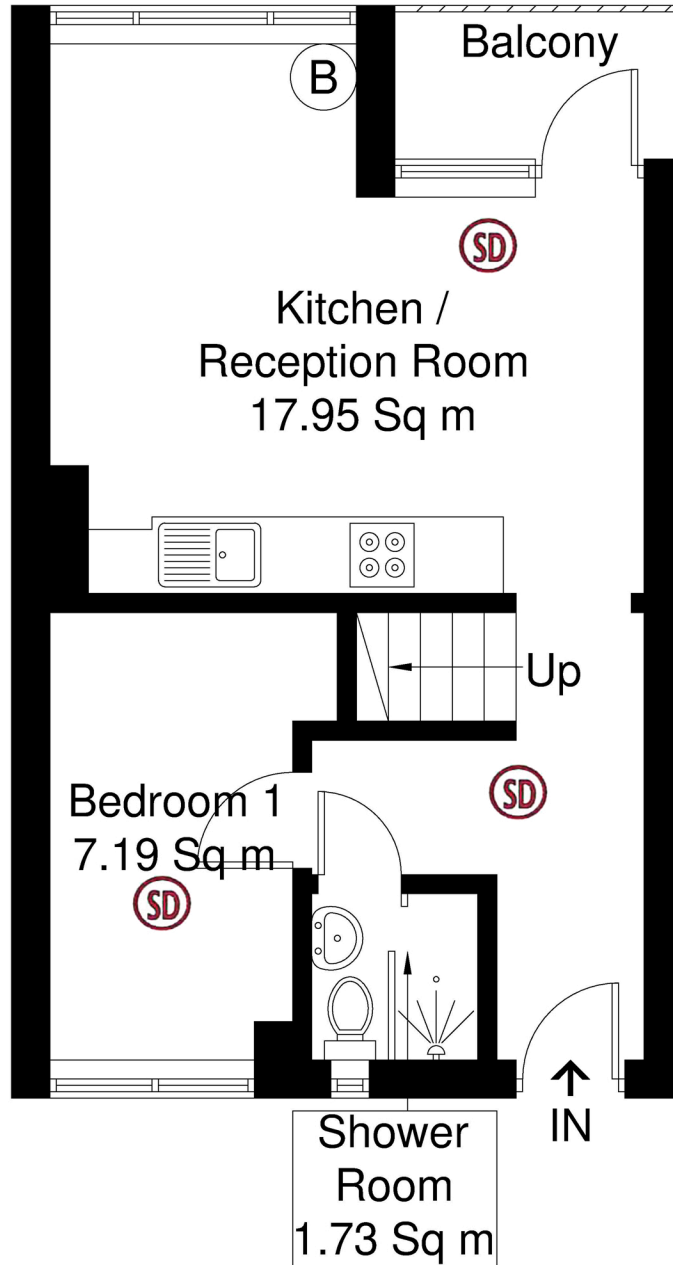


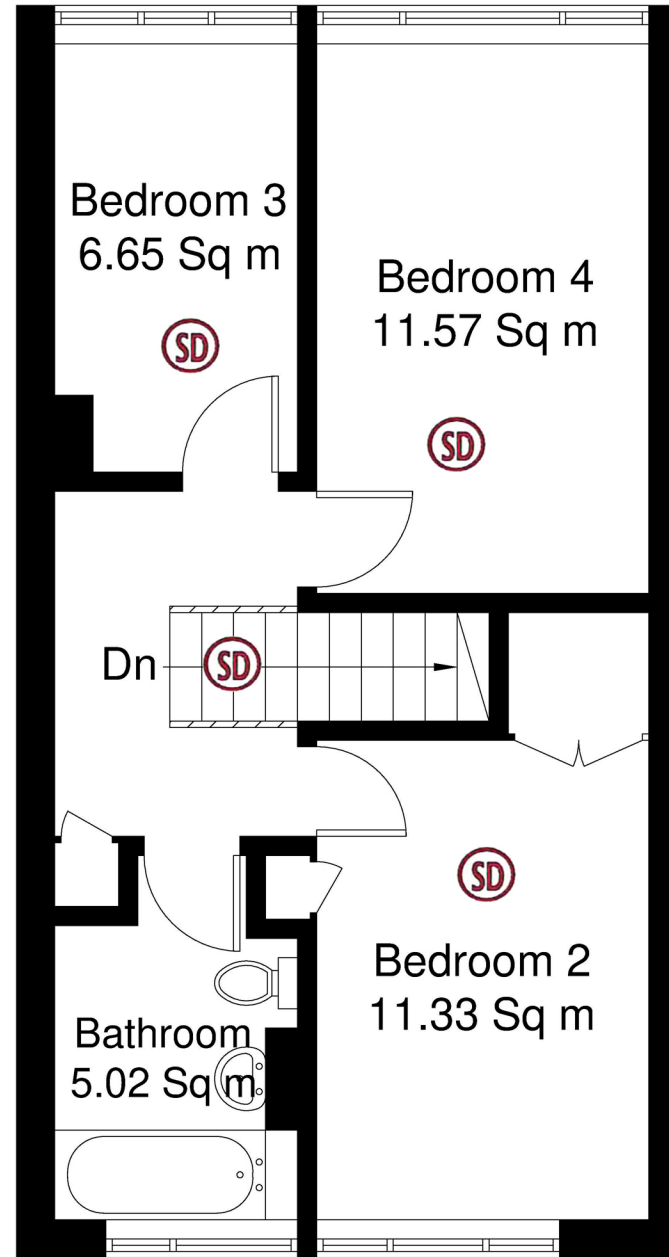
375 Tildesley Road, SW15 3BB

17 December 2025












Approximate Gross Internal Area = 79.3 sq m / 853 sq ft



Third Floor



Fourth Floor

-  30 mins fire resistant partition
-  FD30s Fire Door
- EW** Escape Window
-  Emergency Light
-  Automatic Fire Detection Control Panel
-  Fire Alarm Call Point
-  Fire Extinguisher
-  Fire Blanket
-  Heat Detector
-  Smoke Detector
-  Automatic Fire Detection Alarm Sounder
-  Carbon Monoxide Detector

Although every attempt has been made to ensure accuracy, all measurements are approximate.

The floorplan is for illustrative purposes only and not to scale.

© www.perspective.co.uk